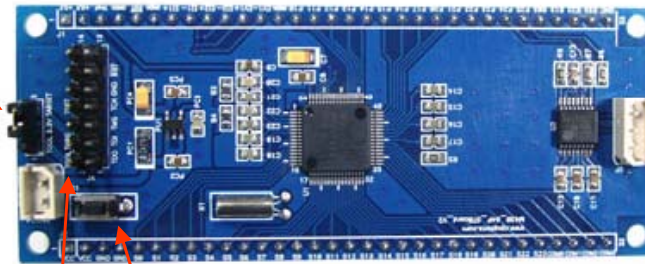


J3 : 전원 입력 방법 설정

NUM	NAME
1-2	TOOL(보드<-JTAG)
2-3	TARGET(보드->JTAG)

PCON1 : DC 전원 입력

NUM	NAME
1	DC3.3V-12V
2	GND



RESET
S/W

J5: UART-RS-232

NUM	NAME
1	TXD
2	RXD
3	GND

J4 : JTAG(4Wire)

NUM	NAME	NUM	NAME
1	TDO	8	TEST
2	TOOL 전원(보드 <- JTAG)	9	GND
3	TDI	10	N.C
4	TARGET 전원(보드 -> JTAG)	11	RSTW
5	TMS	12	N.C
6	N.C	13	N.C
7	TCK	14	N.C

J1 : I/O 확장

NUM	NAME
1 2	3.3V(내부 LDO 출력) 500mA
3	VREF+
4	AGND
5	/RST
6	AGND
7	I1+
8	I1-
9	I2+
10	I2-
11	V1+
12	V1-
13	AGND
14	P1.0
15	P1.1
16	P1.2

NUM	NAME
17	P1.3
18	P1.4
19	P1.5
20	P1.6
21	P1.7
22	P2.0
23	P2.1
24	P2.2
25	P2.3
26	P2.4
27	P2.5
28	R03
29	R13
30	R23
31	R33
32	GND

J2 : I/O 확장

NUM	NAME
1 2	VCC(외부 전원 입력) DC3.3-12V
3 4	GND
5	S0
6	S1
7	S2
8	S3
9	S4
10	S5
11	S6
12	S7
13	S8
14	S9
15	S10
16	S11

NUM	NAME
17	S12
18	S13
19	S14
20	S15
21	S16
22	S17
23	S18
24	S19
25	S20
26	S21
27	S22
28	S23
29	COM0
30	COM1
31	COM2
32	COM3