

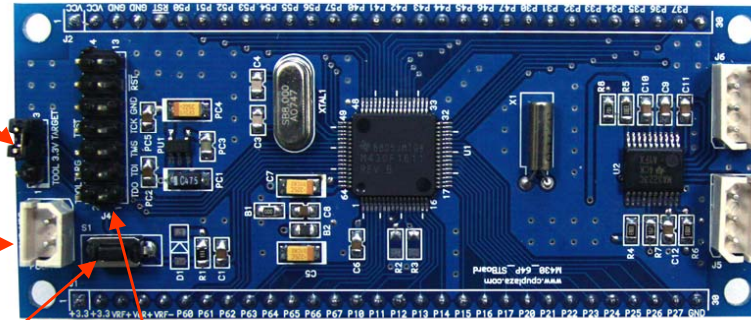
J3 : 전원 입력 방법 설정

NUM	NAME
1-2	TOOL(보드<-JTAG)
2-3	TARGET(보드->JTAG)

PCON1 : DC 전원 입력

NUM	NAME
1	DC3.3V-12V
2	GND

RESET  
S/W



J4 : JTAG(4Wire)

NUM	NAME	NUM	NAME
1	TDO	8	TEST
2	TOOL 전원(보드 <- JTAG)	9	GND
3	TDI	10	N.C
4	TARGET 전원(보드 -> JTAG)	11	RSTW
5	TMS	12	N.C
6	N.C	13	N.C
7	TCK	14	N.C

J6: UART2(RS-232)

NUM	NAME
1	RXD
2	TXD
3	+3.3V
4	GND

J5: UART1(RS-232)

NUM	NAME
1	RXD
2	TXD
3	+3.3V
4	GND

PORT P3.3으로 파워다운 제어  
\* 자동 파워다운 기능

J1 : I/O 확장

NUM	NAME
1 2	3.3V(내부 LDO 출력) 500mA
3	VREF+
4	VeREF+
5	VREF-/VeREF-
6	P6.0
7	P6.1
8	P6.2
9	P6.3
10	P6.4
11	P6.5
12	P6.6
13	P6.7
14	P1.0
15	P1.1

NUM	NAME
16	P1.2
17	P1.3
18	P1.4
19	P1.5
20	P1.6
21	P1.7
22	P2.0
23	P2.1
24	P2.2
25	P2.3
26	P2.4
27	P2.5
28	P2.6
29	P2.7
30	GND

J2 : I/O 확장

NUM	NAME
1 2	VCC(외부 전원 입력) DC3.3-12V
3 4	GND
5	RSTW
6	P5.0
7	P5.1
8	P5.2
9	P5.3
10	P5.4
11	P5.5
12	P5.6
13	P5.7
14	P4.0
15	P4.1

NUM	NAME
16	P4.2
17	P4.3
18	P4.4
19	P4.5
20	P4.6
21	P4.7
22	P3.0
23	P3.1
24	P3.2
25	P3.3
26	P3.4
27	P3.5
28	P3.6
29	P3.7
30	N.C