

* DSP28335 시리얼 다운로드 준비 (드라이버 설치)

1. Spectrumdigital사의 에뮬레이터 드라이버가 설치되어 있어야 합니다.
드라이버는 Spectrumdigital사의 홈페이지(www.spectrumdigital.com)에서 아래와 같이 설치합니다.

1. 홈페이지 하단 Downloads/Drivers 선택

Support

- Help Desk
- Support Site
- [Downloads/Drivers](#)
- Register Your Product

Repair/Return

- Repair Procedure
- Warranty Information

2. Installation under CCSxx(사용자 CCS버전)를 선택

JTAG Emulation

[Installation under CC C3x/C4x](#)

[Installation under CCS 2.21](#)

[Installation under CCS 3.1](#)

[Installation under CCS 3.2](#)

[Installation under CCS 3.3](#)

[XDS560R Installation under CCS 3.x](#)

[JTAG Emulator Utilities](#)

[Emulator Documentation](#)

3. Driver를 선택해 설치 합니다.

Step 1 - Download & Install Emulation Drivers

All Spectrum Digital JTAG emulation drivers for the CCStudio v3.3 platform are integrated into a single driver installer. Download the driver package, then un-zip the package and install the driver. It uses the default directory c:\CCStudio_v3.3. **Spectrum Digital XDS510 emulators, DSKs, eZdsps and EVMs are not impacted by CCS 3.3 SR12 so no specific update is required.**

[>> Download Spectrum Digital Driver Release 3.03.30 \[25-June-2009\] <<](#)

[>> Download Latest ReleaseNotes <<](#)

* DSP28335 시리얼 다운로드(프로그램 설치)

1. 프로그램은 Spectrumdigital사의 홈페이지(www.spectrumdigital.com)에서 아래와 같이 설치합니다.

1. 홈페이지 하단 Downloads/Drivers 선택

Support

- Help Desk
- Support Site
- **Downloads/Drivers**
- Register Your Product

Repair/Return

- Repair Procedure
- Warranty Information

2. C2000 Family 선택

C2000 Family

[eZdsp R2812](#)
[eZdsp F2812](#)
[eZdsp F2808](#)
[eZdsp F28044](#)
[eZdsp F28335](#) ←
[eZdsp LF2407A](#)
[EVMLF2407A](#)

3. SDFflash Utility를 선택해 설치 합니다.

Current Files	Link
Frequently Asked Questions Questions and comments from eZdsp users	FAQ
eZdspF28335 Quick Start Guide Installation and setup guide	PDF
eZdspF28335 Technical Reference Hardware technical reference and schematics	PDF
eZdspF28335 Schematics Schematics	PDF
SDFlash Utility SDFlash documentation + algorithms	SDFlash ←

4. 아래와 같이 다운로드 버전을 선택해 다운 받아 설치 합니다.

C2800 Family		
Release Date	Description	Algorithms
June 8, 2009	C2834x SDFlash Algos V1.0 for programming external SPI Serial EEPROM or Flash connected via SPI-A.	Download Readme
March 17, 2009	F2803x SDFlash JTAG algos. Uses TI F2803x Flash API 1.0.	Download Readme
March 10, 2009	F2802x SDFlash JTAG algos. Uses TI F2802x Flash API 1.0.	Download Readme
September 5, 2008	V3.3 SDFlash serial patch for flash programming via an RS232 serial link. Includes algos for F280x, F2804x, F281x, F2833x , and F2823x devices. Uses TI F281x Flash API V2.10, TI F280x Flash API V1.00, TI F280x Flash API V3.02, TI F2833x Flash API V2.10, and TI F2823x Flash API V2.10. Requires SDFlash v1.60 or later. All previous serial algos are obsolete and not recommended.	Download ← Readme

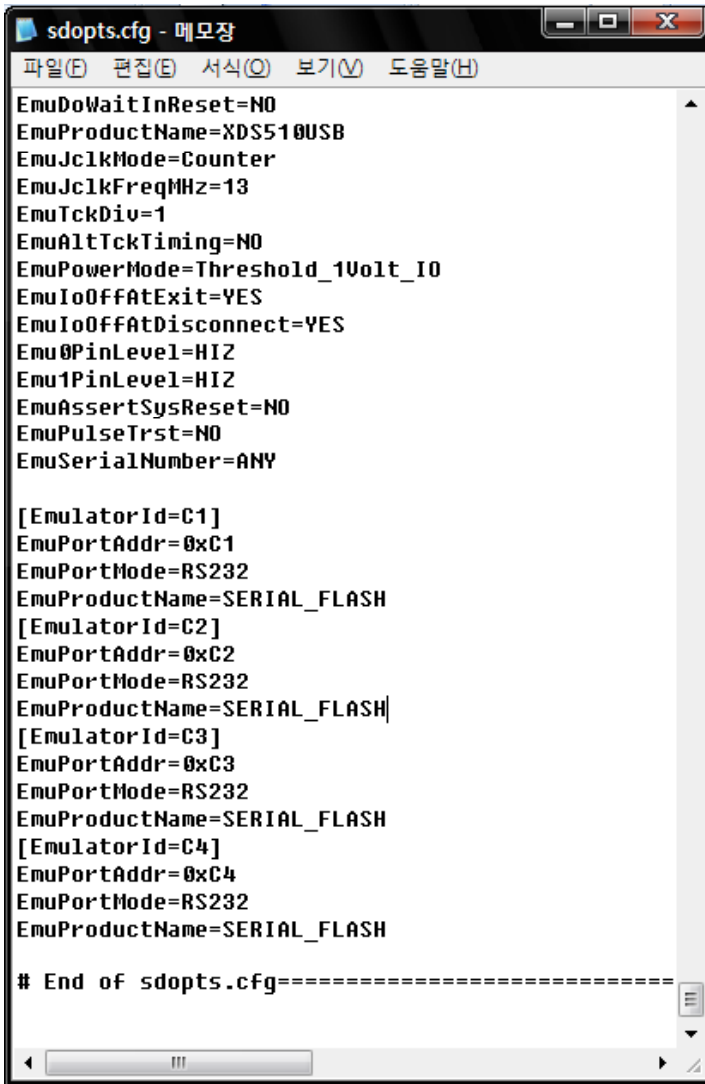
5. 설치 후 생성된(바탕화면) Edit sdopts.cfgv3.3 파일을 편집기(메모장)를 사용해 엽니다. 버전에 따라 달라질수 있습니다.



6. 아래와 같이 파일의 마지막 부분에 내용을 추가 합니다.

```
[EmulatorId=C1]
EmuPortAddr=0xC1
EmuPortMode=RS232
EmuProductName=SERIAL_FLASH
[EmulatorId=C2]
EmuPortAddr=0xC2
EmuPortMode=RS232
EmuProductName=SERIAL_FLASH
[EmulatorId=C3]
EmuPortAddr=0xC3
EmuPortMode=RS232
EmuProductName=SERIAL_FLASH
[EmulatorId=C4]
EmuPortAddr=0xC4
EmuPortMode=RS232
EmuProductName=SERIAL_FLASH
```

* 메모장에 추가된 모습



```
sdopts.cfg - 메모장
파일(F) 편집(E) 서식(O) 보기(V) 도움말(H)
EmuDoWaitInReset=NO
EmuProductName=XDS510USB
EmuJclkMode=Counter
EmuJclkFreqMHz=13
EmuTckDiv=1
EmuAltTckTiming=NO
EmuPowerMode=Threshold_1Volt_IO
EmuIoOffAtExit=YES
EmuIoOffAtDisconnect=YES
Emu0PinLevel=HIZ
Emu1PinLevel=HIZ
EmuAssertSysReset=NO
EmuPulseTrst=NO
EmuSerialNumber=ANY

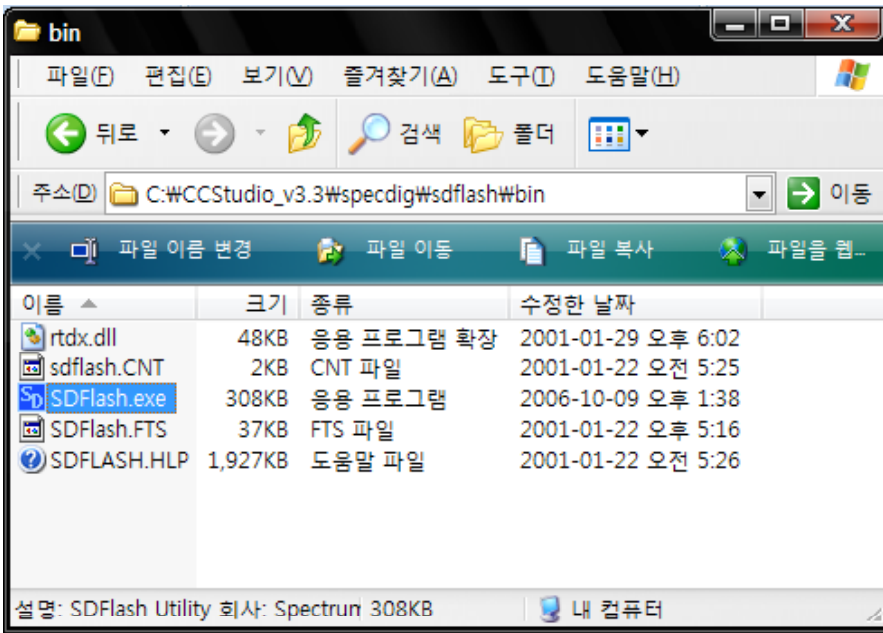
[EmulatorId=C1]
EmuPortAddr=0xC1
EmuPortMode=RS232
EmuProductName=SERIAL_FLASH
[EmulatorId=C2]
EmuPortAddr=0xC2
EmuPortMode=RS232
EmuProductName=SERIAL_FLASH
[EmulatorId=C3]
EmuPortAddr=0xC3
EmuPortMode=RS232
EmuProductName=SERIAL_FLASH
[EmulatorId=C4]
EmuPortAddr=0xC4
EmuPortMode=RS232
EmuProductName=SERIAL_FLASH

# End of sdopts.cfg=====
```

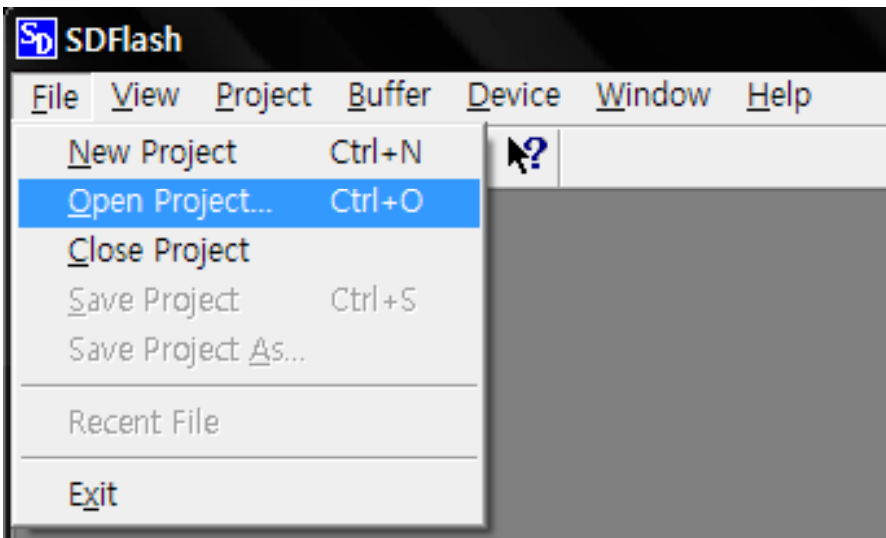
7. 메모장에 수정된 내용을 확인 저장 후 닫습니다.

* DSP28335 시리얼 다운로드(프로그램)

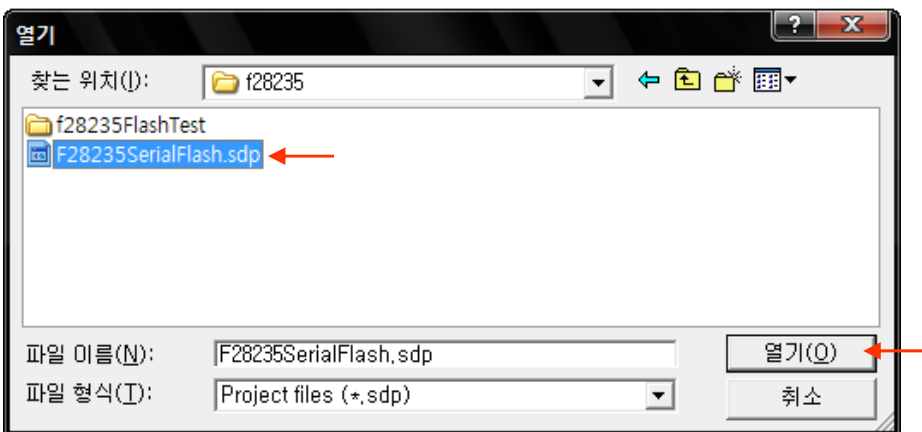
1. 아래 설치된 디렉토리에서 SDFlash.exe를 실행 합니다. <<- C:\WCCStudio_v3.3\specdigWsdflashWbin



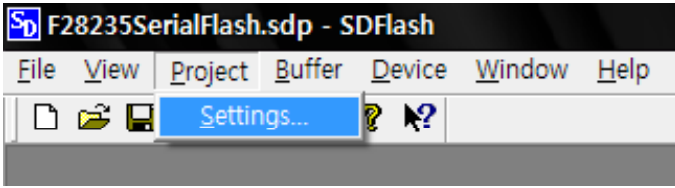
2. 프로젝트를 Open 합니다. <<- F28335SerialFlash.sdp



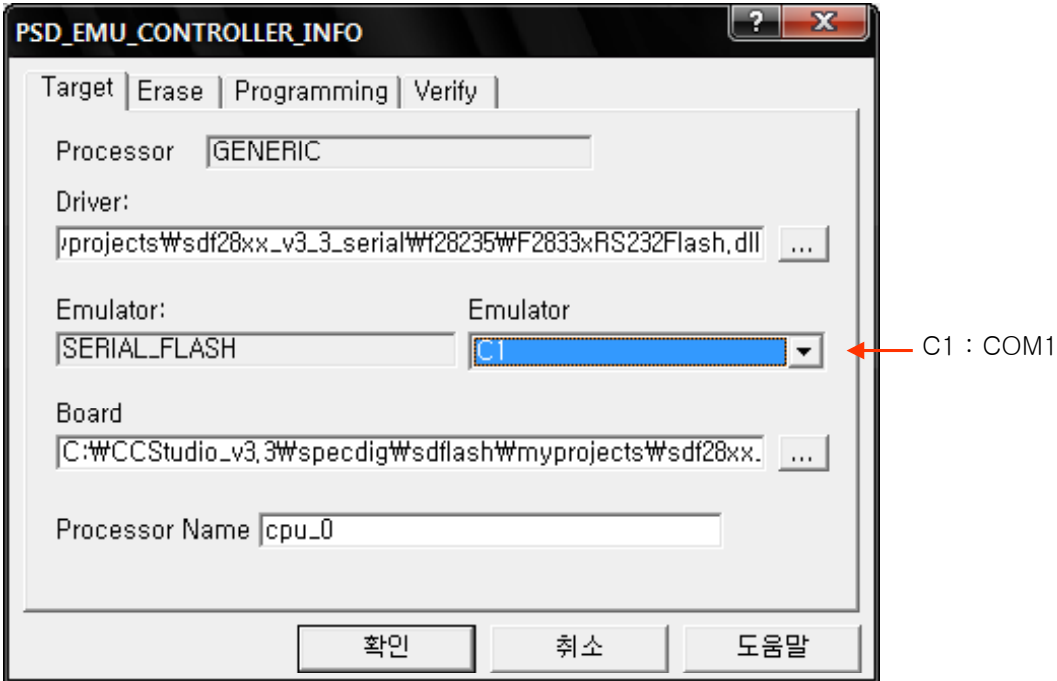
C:\WCCStudio_v3.3\specdigWsdflashWmyprojectsWsd28xx_v3_3_serialWf28335WF28335SerialFlash.sdp



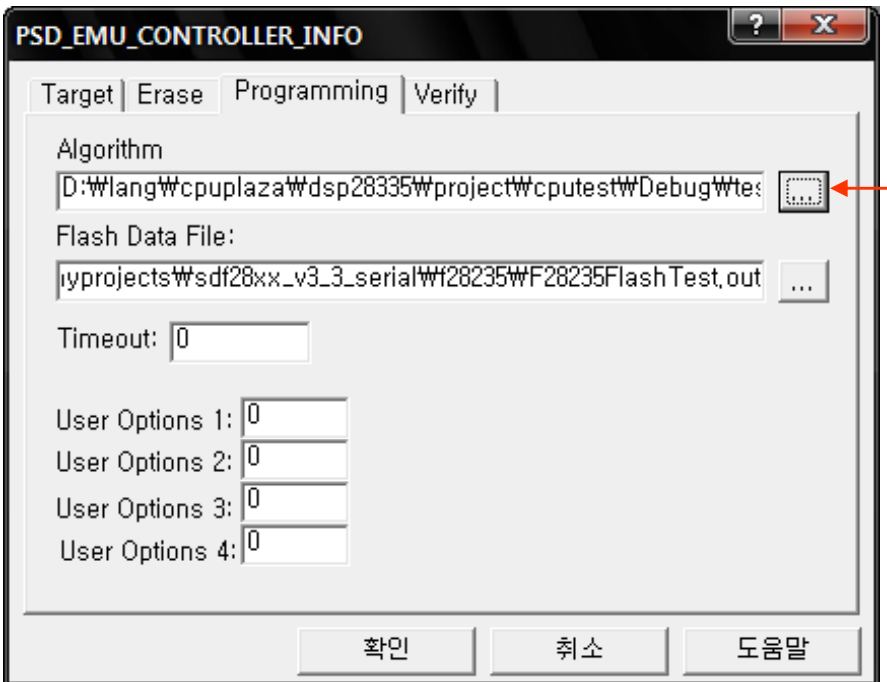
3. Project->Settings 버튼을 클릭 합니다.

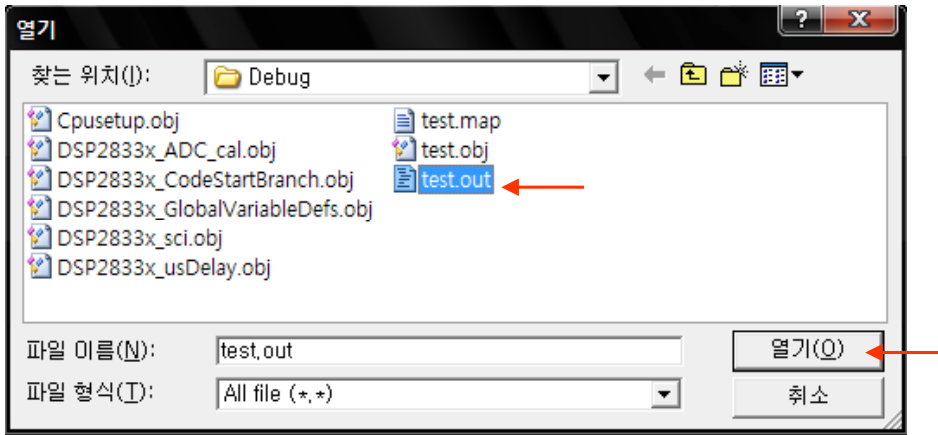


4. 통신 포트(PC)를 선택 합니다.

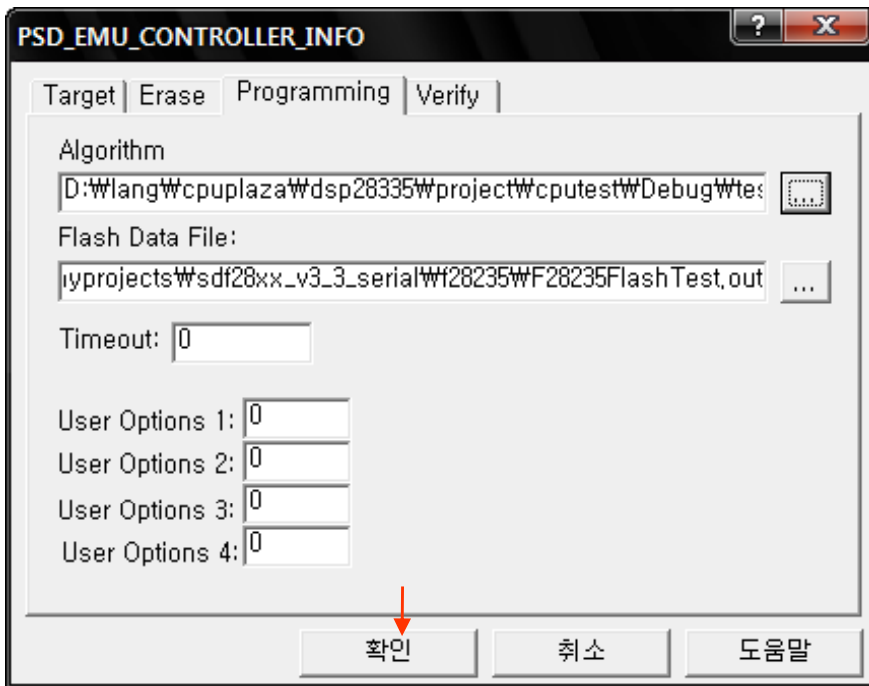


5. Programming 탭을 선택 후 프로그램 할 파일(*.out)을 로드 합니다

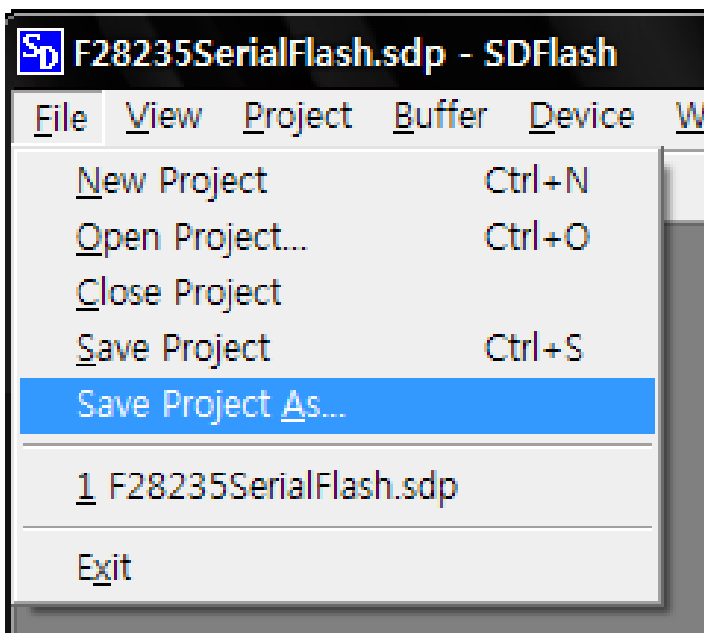




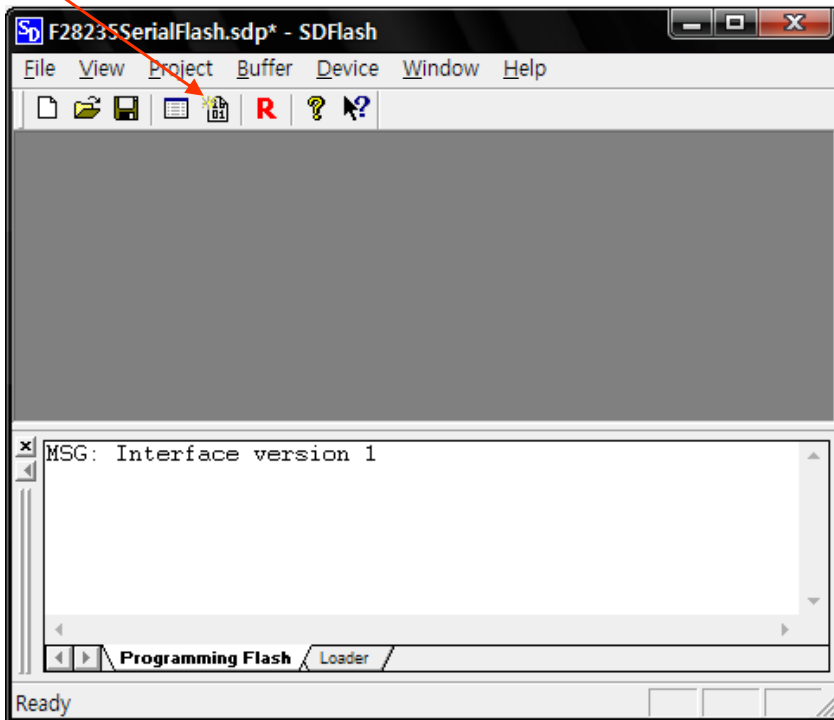
6. Project->Settings 창을 닫습니다.



7. 프로젝트 파일을 저장 합니다. <- File-> Save Project As



8. 전원을 Off후 기존의 JTAG에 물레이터를 제거후 JP1의 점퍼만 Off(아래)한후 PC와 TTL_RS232L(3.3V) 모듈을 J4를 통해 연결후 전원을 인가 합니다.
Flash탭 을 선택해 프로그램을 시작 합니다.



9. Start버튼 을 클릭해 프로그램을 진행 합니다.

